



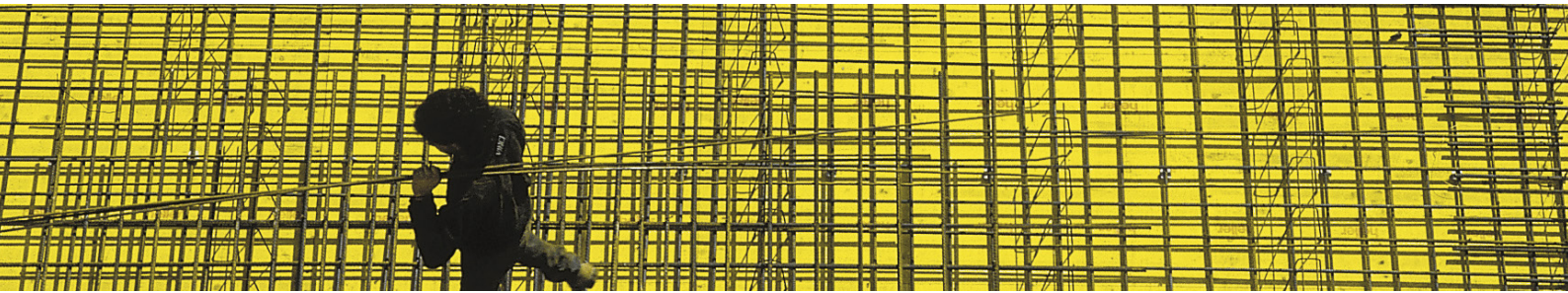
**Westfälische
Drahtindustrie GmbH**

Construction steel

Product range



Construction steel



General

We process cold-ribbed (CR) construction steel in rings and coils on one of the most modern systems in Europe. As a result of special wire rod precursor material which we have developed in close cooperation with our suppliers, our reinforcement wire achieves first class technical values, especially in the case of expansion and the Re/Rm relationship. For the user, this means: Easy processing and the dimensional stability of the frame. From rolled wire through to the manufactured product: Continuous quality monitoring by the company's own quality management office and our third party test centre (MPA Dortmund) ensure you constant quality and safety that is unsurpassed.

Production sites

Westfälische Drahtindustrie GmbH **Site Salzgitter - Construction steel -**

Museumstrasse 64
D-38229 Salzgitter

Phone: + 49 (0) 5341 - 88 87 0
Fax: + 49 (0) 5341 - 88 87 85
E-Mail: wdi_salzgitter@wdi-sz.de
Web: www.wdi.de

Westfälische Drahtindustrie GmbH **Site Brandenburg - Armoured wire -**

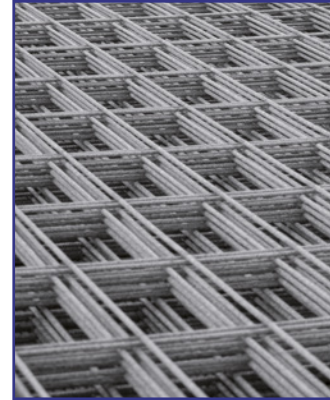
Kummerléstraße 1
D-14770 Brandenburg an der Havel

Phone: +49 (0) 3381-79 37 850
Fax: +49 (0) 3381-79 37 879
E-Mail: draht.brandenburg@wdi-dsw.de
Web: www.wdi.de

Products

Support mats

- ↳ Materials in accordance with DIN 488
- ↳ Dimensions: L= 5,000 and/or 6,000mm / Width = 2,150 – 2,350mm
- ↳ Diameter: 5.0 up to 10.0mm
- ↳ Packaging/Delivery form: depending on the type 20, 30, 40, 50 factory bundle



Concrete reinforcement steel in a ring (CR)

- ↳ Materials in accordance with DIN 488
- ↳ Diameter 6, 8, 10 and 12 mm
- ↳ 2,500 kg coils or according to customer's needs
- ↳ Sloping on the left and right hand side



Armoured wire (in accordance with DIN 488)

- ↳ Materials: B500A+G (formerly BST500G), B500A+P (formerly BST500P)
- ↳ Embodiment: smooth and profiled • surface: dry bright
- ↳ Diameter 4.0 up to 15.0mm • other Ø upon request
- ↳ Coils 500 up to 2,500kg



Rods

- ↳ Embodiment: smooth and profiled
- ↳ Diameter of 3.0 up to 10.0mm
- ↳ Length: 1,000 up to 4,000 mm

Spacers / Support baskets

- ↳ Distance support, chains • certified and non-certified
- ↳ Dimension range: H= 60 - 400mm • W= 2,000mm



Construction steel

Impress

Westfälische Drahtindustrie GmbH

Wilhelmstr. 7 • D-59067 Hamm

Phone: +49 (0) 23 81 / 276-0

Fax: +49 (0) 23 81 / 276-211

E-Mail: draht.hamm@wdi.de

www.wdi.de

Technical changes / Modifications to articles are reserved.

We accept no liability for printing errors.

The production of copies and dissemination by photomechanical means (including extracts) is only permitted with the prior written consent of Westfälische Drahtindustrie GmbH, Hamm

© WDI 11/2014